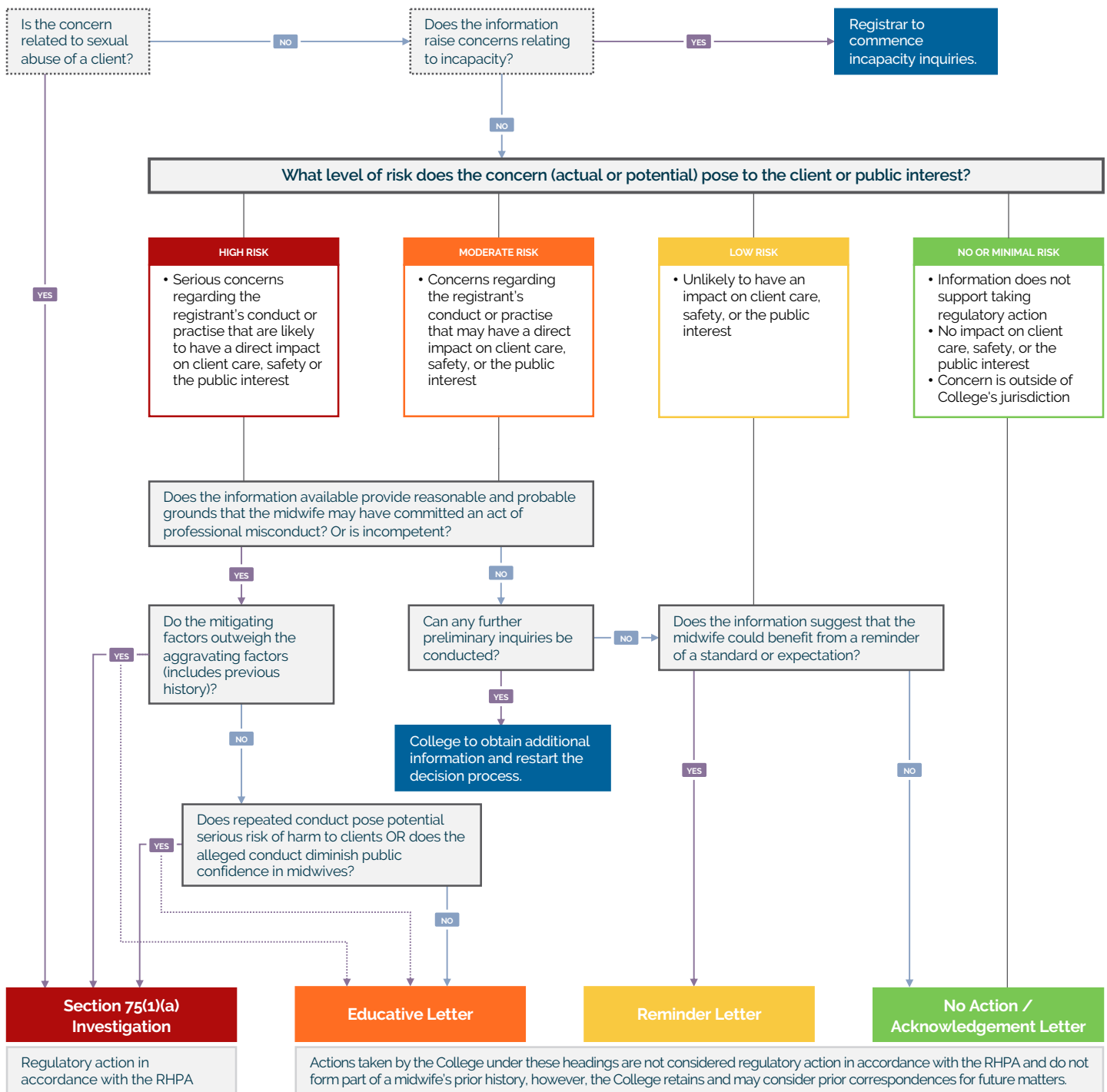




## Registrar's Investigation Decision Making Tool

When information about a registrant's conduct or actions (that is not a formal complaint) comes to the attention of the College, the Registrar has a responsibility and obligation to take the steps necessary to address the alleged conduct or actions of the registrant. This decision-making tool assists the Registrar to determine an appropriate outcome relative to risk to the public. The tool demonstrates a consistent, and transparent formula that guides the Registrar's decision-making (but remains discretionary) when it considers information and decides on whether a regulatory outcome or further actions are required in the public interest.

The College may decide to conduct preliminary and informal inquiries as part of the process. Preliminary inquiries are not always required but may include obtaining additional information from the source and/or the registrant, or obtaining a copy of the midwifery record relevant to the alleged conduct. The nature of the preliminary inquiries will vary from case to case, depending on the alleged conduct and potential risk to the public.



Regulatory action in accordance with the RHPA

Actions taken by the College under these headings are not considered regulatory action in accordance with the RHPA and do not form part of a midwife's prior history, however, the College retains and may consider prior correspondences for future matters.